

Leading The Industry With Modular Solutions

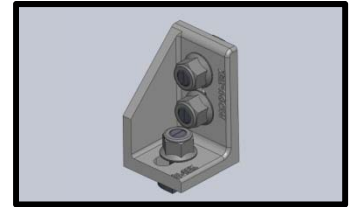
Tekno News

3-D CAD Symbols:

Due to popular request, Tekno has added a new item available for download from our website. As many of our customers utilize our components to design structures and equipment for plant use, we are making our 3-d symbol library available for download.

The file is a .zip file which is available under the Catalog / Brochure section. Simply click on the 3-d symbols item and the file will begin to download.

Files are in a Standard ASCII Text format for easy importation into any 3-d CAD software package. If you are unable to download the file, please call us at (270) 773-4181 for a copy on CD.



Featured Product



New Style



Previous Style

New Shock Absorbed End Stop

Tekno has developed a new style shock absorbed end stop for system use.

Some unique features of the new design are....

The new design utilizes an integrated air cylinder for blade to retract and let the pallet through with no problems. With the previous style there was a spring and it would often drag the pallet with caused problems.

The new design also has a 1 5/8" deceleration compared to the previous product which could only decelerate 3/4" to 1".

Modu-Tek Spotlight

Ergonomic Workbenches

This month we are featuring Tekno's modular ergonomic workbenches. Utilizing our readily available extrusions and hardware, Tekno can supply the units in various lengths to fill your needs. In-stock, off-the-shelf components and configurable design means low cost and fast deliveries to you.

The unit comes complete with overhead structure with task lighting and an integrated tool rail with trolley for easy access of operator tools.

The table top has 24" of electrically controlled vertical height adjustment. Units can be supplied with only a table top frame for attachment of your fixtures. A variety of table top materials are available.

Send your application information to components@tekno.com today for a quote or call to discuss your application.

