



# Leading the Industry with Modular Solutions

## March 2016 Newsletter

### Progress On The New Sales Trailer



As you can see, this is no longer a drawing. It is starting to really take shape. The frame is built and the floors are going on. This is a show on wheels that you are not going to want to miss! This show trailer will be equipped with the latest Tekno products that you can get your hands on and see what we can do for your company to increase your production. If you have any interest in scheduling a show in the future, please contact us so we can get you on the schedule. [Sales@Tekno.com](mailto:Sales@Tekno.com)

### New Technology



Tekno is moving ahead with technology like always! We've recently purchased a new portable 3D scanning arm with reverse engineering capabilities. With this new technology we can quickly and accurately measure anything, anywhere! We will be able to do a full quality inspection of assembled parts. The integrated software allows engineers to set tolerance ranges on the parts that are inspected quickly and easily. The software will visually show what areas are out of range and within. A full printed report can be provide with each part and stored for your records.

Can't get a 3d model of your components? That won't be a problem anymore, we can scan your parts and reverse engineer a 3d model to use for tooling design or fixturing. We can also directly export scanned parts to our 3d printer to make a replica to test for fit or function within a matter of hours. All of these exciting new technologies are at our fingertips so we can better serve you!

**Tekno Inc.**  
**One Wall Street**  
**Cave City, KY 42127**  
**270-773-4181**  
**[Sales@Tekno.com](mailto:Sales@Tekno.com)**

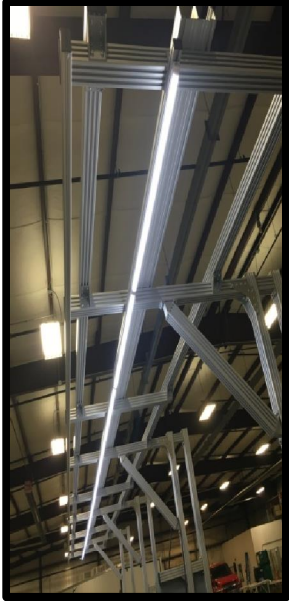




# Leading the Industry with Modular Solutions

## February 2016 Newsletter

### New Product



Tekno is proud to introduce our new LED work lights! LED lights are quickly becoming the industry standard, and many of you have requested them to be included on your conveyor overhead. However, the pricing for these LED lights is much higher than their predecessors. This led us to develop our own LED light bars to be used in conjunction with our conveyor systems, work tables and other equipment. We now offer either 2 $\phi$  long (V087022100) or 4 $\phi$  long (V087012100) LED lights. These lights mount quickly to our T-slotted extrusion via a spring clip. They can be connected end to end to make a continuous run with a junction adapter (V087042100) or you can use a connection cable (V087032100) to provide a gap between lights as needed. Call us today for a quote on any of these by products or upgrading your whole line!

### Continuous Improvements at Tekno

Tekno is a company that strives for continuous improvement. Education on the newest products is a top priority for us. In the last few months we have had several Lunch and Learns with the following companies: Patlite, Omron, Rockwell Automation with more happening in the future. We believe it is important to know what the latest and greatest products are available. This ensures we remain front runners in providing your industry with leading modular solutions.

**Rockwell  
Automation**

**OMRON**

**PATLITE®**

#### UPCOMING NEWS:

Tekno is planning an open house in late spring/early summer 2016. We will be releasing more information as the dates are set and plans are finalized. We look forward to sharing with our customers and suppliers all of the exciting new products and improvements since the last open house. Stay tuned for more information.

**Tekno Inc.**  
One Wall Street  
Cave City, KY 42127  
270-773-4181  
Sales@Tekno.com

