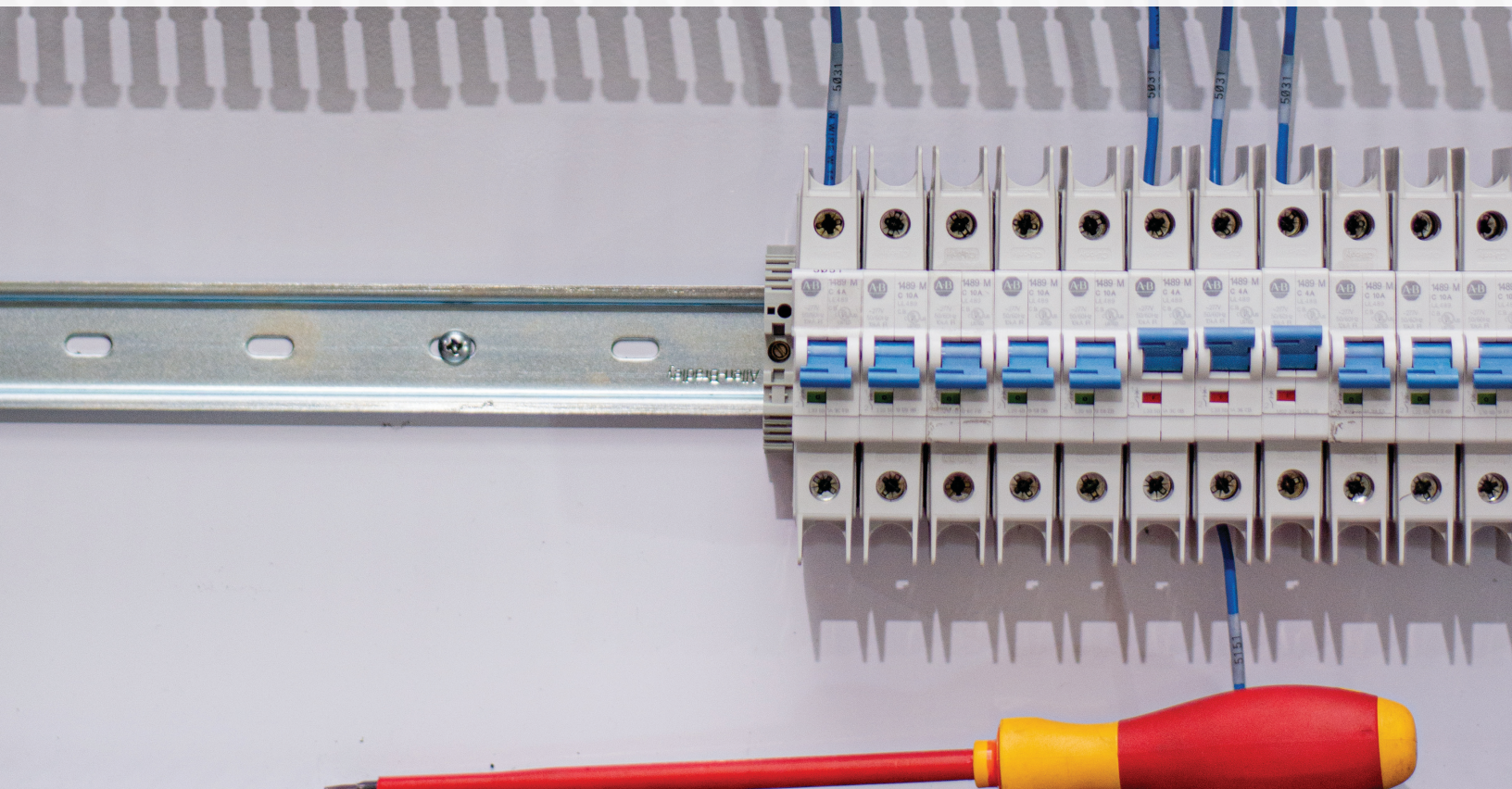
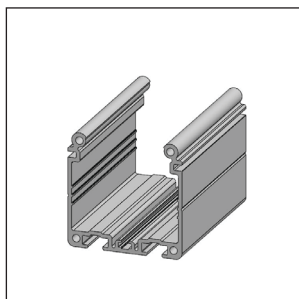




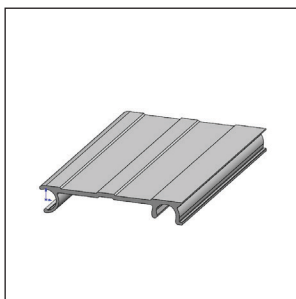
ELECTRICAL COMPONENTS



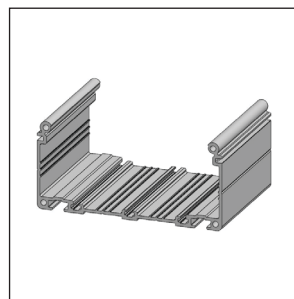
STANDARD ALUMINUM WIREWAY COMPONENTS



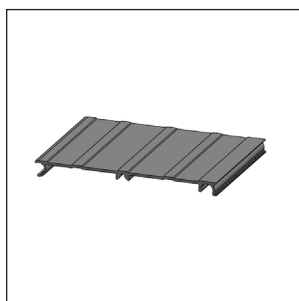
Single Wireway
E0600121
Page 124



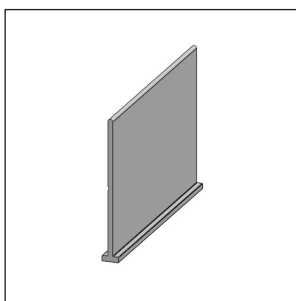
Single Wireway Cover
E0600221
Page 125



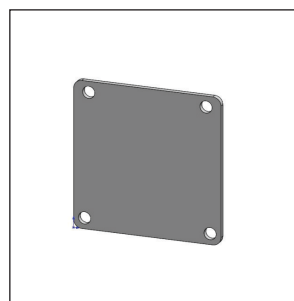
Double Wireway
E060052100
Page 126



Double Wireway Lid
E060062100
Page 127

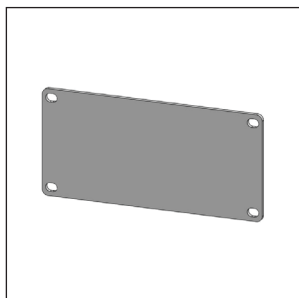


Wireway Divider
H060072100
Page 128

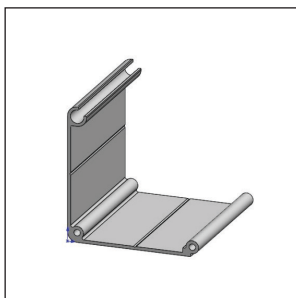


Single Wireway End Plate
H050012100
Page 129

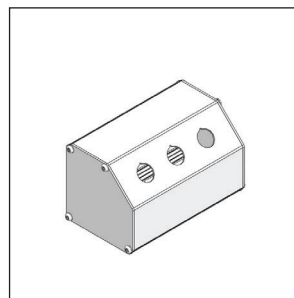
WIREWAY JUNCTION COMPONENTS



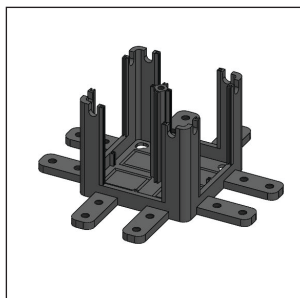
Double Wireway End Plate
H050052101
Page 130



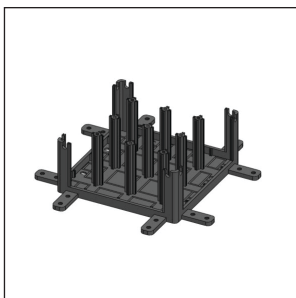
Wireway Junction
E060032100
Page 131



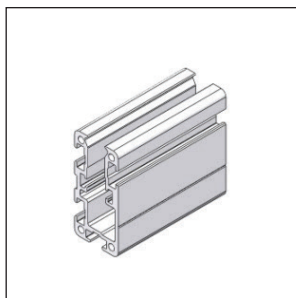
3 Hole Pushbutton Box
V020251100
Page 132



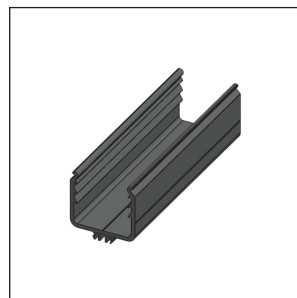
Single Wireway Junction
Box Base
V046111100
Page 133



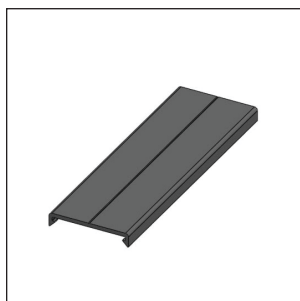
Double Wireway Junction
Box Base
V046012100
Page 134



Hot Rail Extrusion
E061000100
Page 135



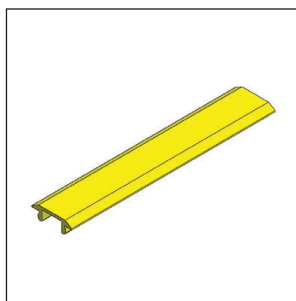
1 5/8" X 1 1/2"
Plastic Wireway
E050212100
Page 136



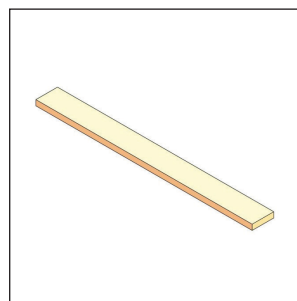
1 5/8" Plastic Wireway Cover
E050222100
Page 137



1 5/8" Plastic Wireway Wire
Keeper Clip
H050062100
Page 138



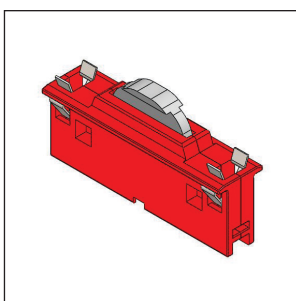
Extrusion, Hot Rail,
Cover, Yellow
E050142100
Page 139



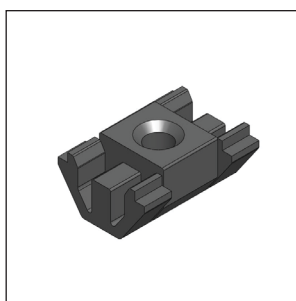
Electrical, Hot Rail,
Copper Bar
V010050100
Page 140



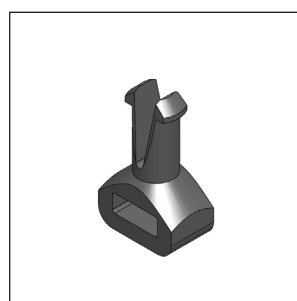
Extrusion, Hot Rail, Carrier
For Copper Bus
E050132100
Page 141



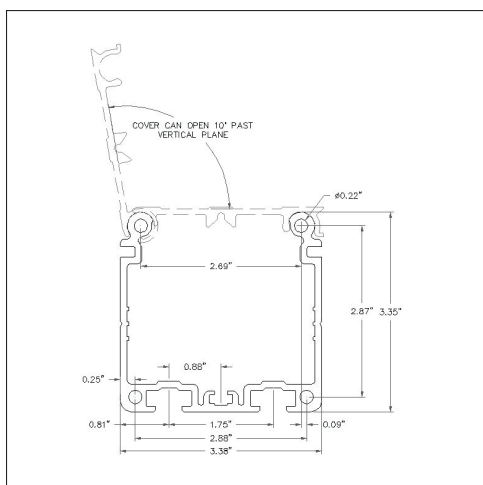
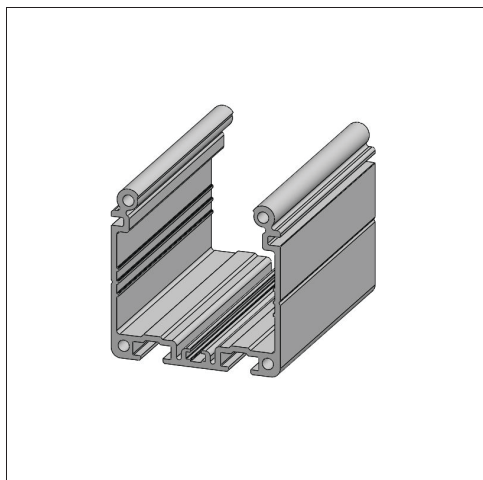
Hot Rail Brush Assembly
V010011100
Page 142



Hardware, T-Slot Anchor
H050072100
Page 143



Hardware, Zip Pin
H050082100
Page 143



E0600121 Single Wireway

FEATURES:

- The standard Modu-Tek® T-slot configuration on each side of the extrusion allows the use of standard mounting hardware to fasten the wire way to all T-slotted structural extrusions.
- V-shaped indentation marks running along the length of three sides of the extrusion facilitate the proper alignment of a knockout punch for the attachment of conduit fittings.
- The standard 3 x 3 Slot End Cap (H0400721) fits the extrusion profile.
- The open top with snap-in wire way cover allows easy access for wiring.

MATERIALS:

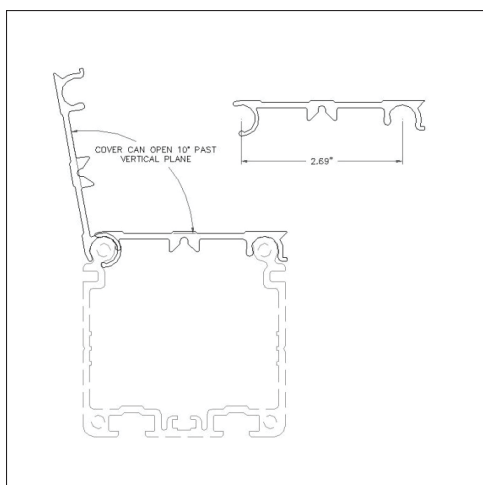
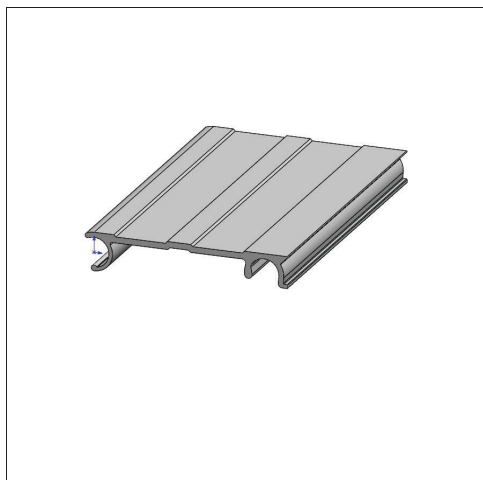
- 6063-T6 Aluminum Alloy with a 201-R1 Clear Anodize Exterior finish.
- Cross Sectional Area (A): 1.70 in² [10.94 cm²]

WEIGHT PER FOOT:

- 1.99 lbs [0.90 kg]

STANDARD LENGTH:

- 242 Inches



E0600221 Single Wireway Cover

TYPICAL USE:

- Provides a hinged cover for the Modu-Tek® Wireway (E0600121).

FEATURES:

- Unique profile snaps onto the Wireway extrusion providing a hinged cover along the entire length of the Wireway without the use of fasteners.
- The Wireway extrusion is symmetrical, allowing the piece to be attached as either a right hand or left hand cover.
- Profile design allows the cover to hinge open 10° beyond the vertical position to provide easy access for wiring.
- Easy lift-off profile allows the cover to be removed.

MATERIALS:

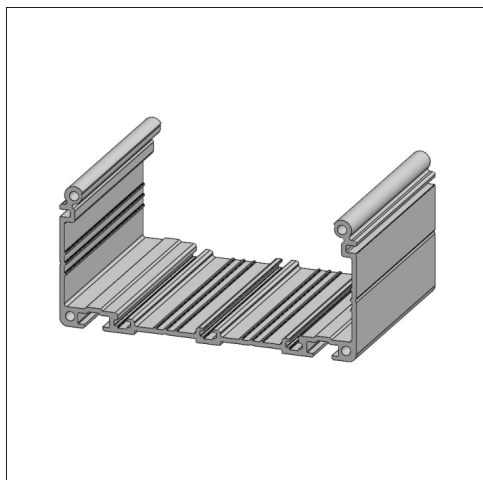
- 6063-T6 Aluminum Alloy with a 201-R1 Clear Anodize Exterior finish.
- Cross Sectional Area (A): 0.37 in² [2.39 cm²]

WEIGHT PER FOOT:

- 0.44 lb [0.20 kg]

STANDARD LENGTH:

- 242 Inches



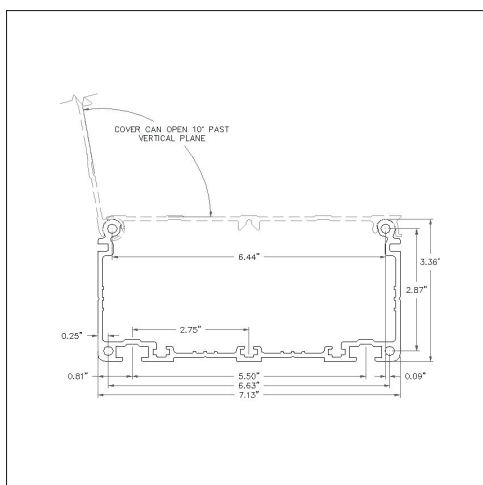
E060052100 Double Wireway

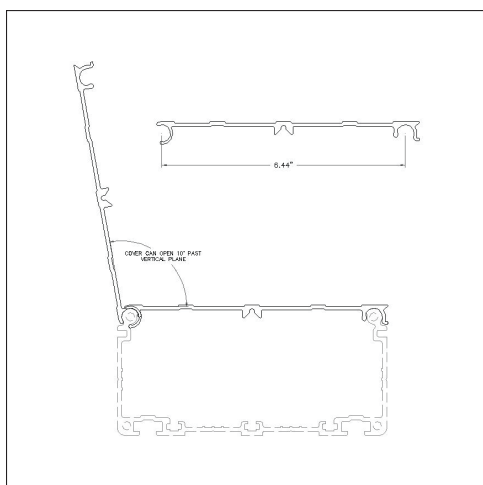
TYPICAL USE:

- Double Wireway Extrusion – Used for a channel to run electrical or pneumatic lines.

FEATURES:

- T-slot extrusions for quick and easy mounting with any of Tekno's bracketry. The center is made to accept up to three dividers which can be used together or in any combination to customize the wire space and keep high voltage separate for low voltage or pneumatic lines, depending on your application.





E060062100 Double Wireway Lid

TYPICAL USE:

- Provides a hinged cover for the Modu-Tek® Wireway (E0600121).

FEATURES:

- Unique profile snaps onto the Wireway extrusion providing a hinged cover along the entire length of the Wireway without the use of fasteners.
- The Wireway extrusion is symmetrical, allowing the piece to be attached as either a right hand or left hand cover.
- Profile design allows the cover to hinge open 10° beyond the vertical position to provide easy access for wiring.
- Easy lift-off profile allows the cover to be removed.

MATERIALS:

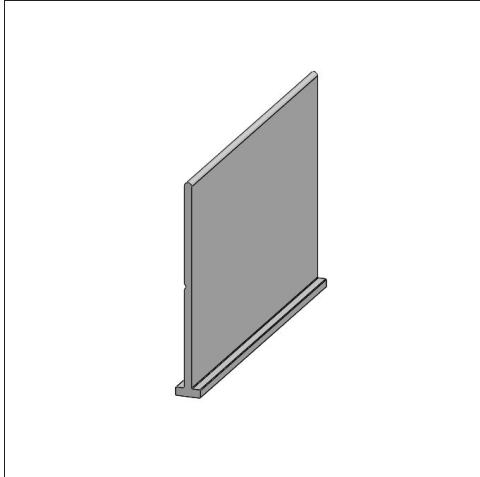
- 6063-T6 Aluminum Alloy with a 201-R1 Clear Anodize Exterior finish.
- Cross Sectional Area (A): 0.37 in² [2.39 cm²]

WEIGHT PER FOOT:

- 0.44 lb [0.20 kg]

STANDARD LENGTH:

- 242 Inches



E060072100 Wireway Divider

TYPICAL USE:

- Wireway Divider Extrusion – Used to separate Tekno's Wireway extrusions, keeping high and low voltage cables apart.

FEATURES:

- Can be slid into either single Wireway (E060012102) or double Wireway (E060102100).

MATERIAL:

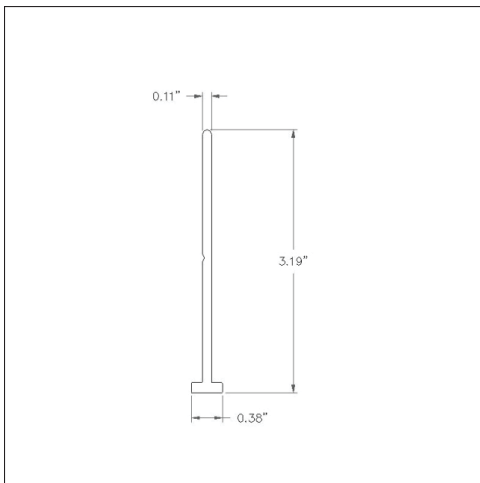
- Mild Steel.

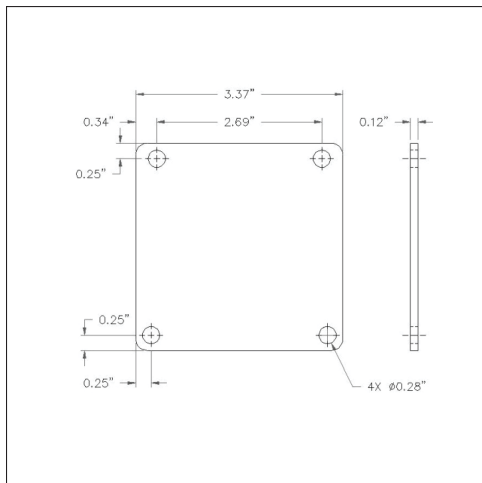
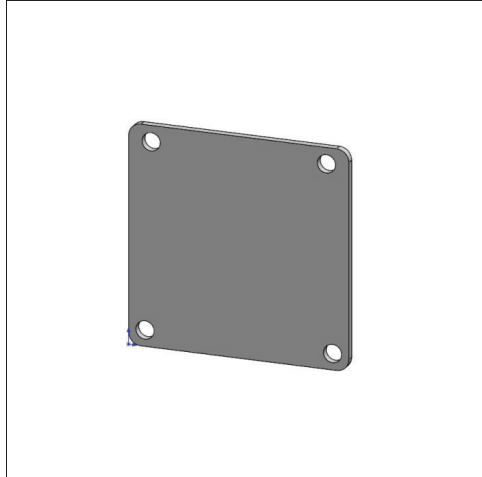
WEIGHT PER FOOT:

- 0.62 lb [0.28 kg]

STANDARD LENGTH:

- 242 Inches





H050012100 Single Wireway End Plate

TYPICAL USE:

- The aluminum plate covers the exposed end of the Modu-Tek® Wire way (E0600121).

FEATURES:

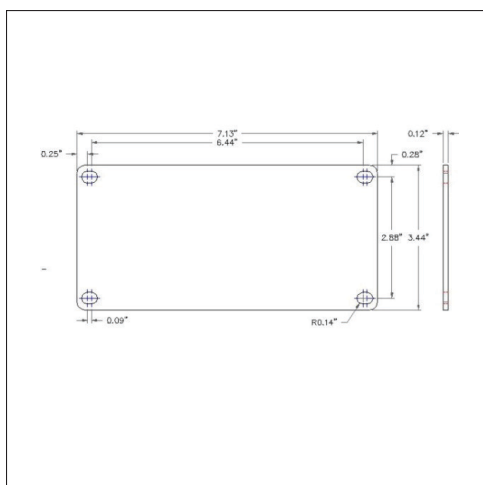
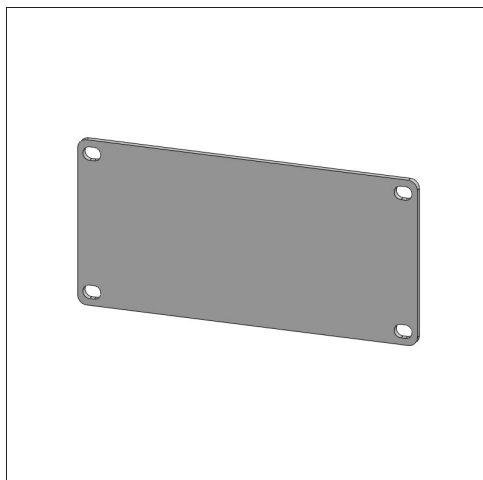
- Although the wire way extrusion end can also accommodate the 3 x 3 Slot Plastic End Cap (H0400721), the aluminum Wire way End Plate is the best choice for the secure attachment of conduit fittings.

MATERIAL:

- 6063-T6 Aluminum Alloy with a Clear Anodize Finish.

WEIGHT:

- 0.14 lb [0.06 kg]



H050052101 Double Wireway End Plate

TYPICAL USE:

- Double Wireway end cap used to cap off the ends of Tekno's double Wireway extrusion (E060102100).

FEATURES:

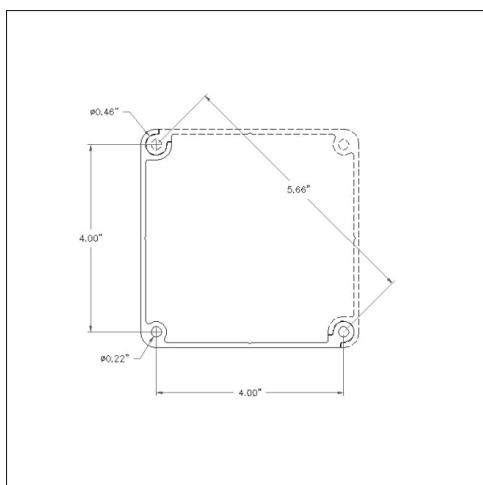
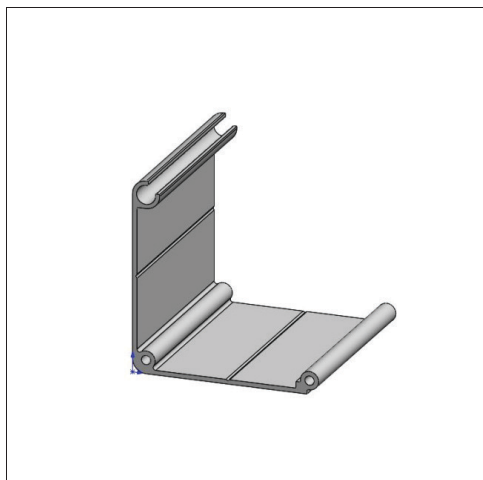
- Although the wire way extrusion end can also accommodate the 3 x 3 Slot Plastic End Cap (H0400721), the aluminum Wire way End Plate is the best choice for the secure attachment of conduit fittings.

MATERIAL:

- 6063-T6 Aluminum Alloy with a Clear Anodize Finish.

WEIGHT:

- 0.14 lb [0.06 kg]



E060032100 Wireway Junction

TYPICAL USE:

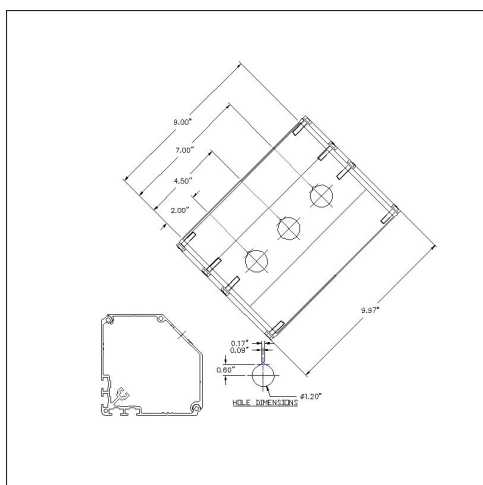
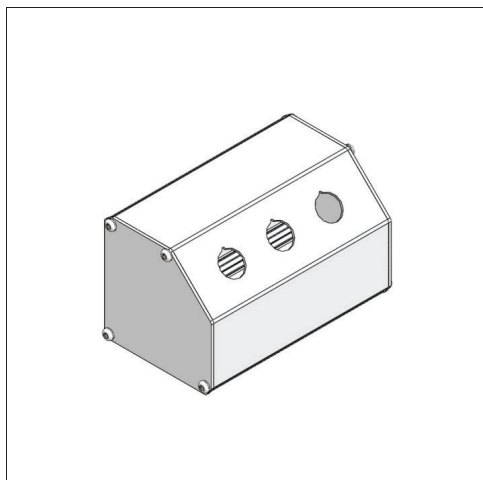
- Provides a 90° junction at the end of a Wireway section for the routing of air and electrical lines between termination points.

FEATURES:

- The symmetrical design of the junction provides an open-style extrusion to facilitate the addition of conduit fitting knockout holes from the inside of the extrusion.
- Two pieces of the extrusion can be mated together and firmly secured between two Wireway Junction End Plates to form a fully enclosed junction box.
- Since the Wireway Junction is an extrusion, various lengths can be accommodated to create simple 90° or 45° elbow, "T" configurations, or junction boxes with terminations from Wireway to field devices.

MATERIAL:

- 6063-T6 Aluminum Alloy with a 201-R1 Clear Anodize Exterior Finish.



E060032100 Wireway Junction

TYPICAL USE:

- An enclosure for the mounting and wiring of three electrical components.

FEATURES:

- Allows three electrical components to be mounted at a 45° angle.
- Mounts to a Wireway extrusion (E0600121) when wire way knockouts are specified.
- Can also be mounted to a conduit.

MATERIALS:

- Junction Box Extrusions: 6063-T6 Aluminum Alloy with a Clear Anodize Finish.
- End Plates: 6061 Aluminum Alloy with a Clear Anodize Finish.
- Button Head Cap Screws: 18-8 Stainless Steel.

WEIGHT:

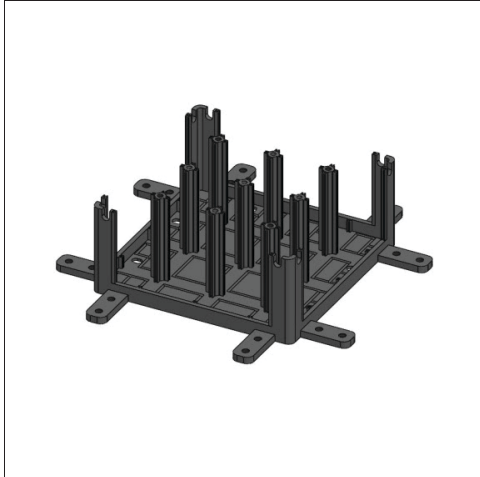
- 2.40 lbs [1.09 kgs]

HARDWARE INCLUDED:

- 3-Hole 45° Wireway Junction Cover (E0600421), 1 each.
- Wireway Junction (E0600321), 1 each.
- 45° Wireway Junction End Plates (H0500321), 2 each.
- 1/4" - 20 x 1 Pan Torx Screw Type F Plated (25C100PTFZ), 8 each.

HARDWARE RECOMMENDED FOR ASSEMBLY:

- None.



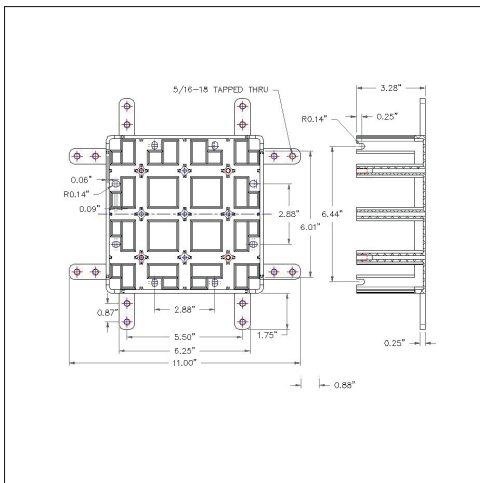
V046011101 Double Wireway Junction Box base

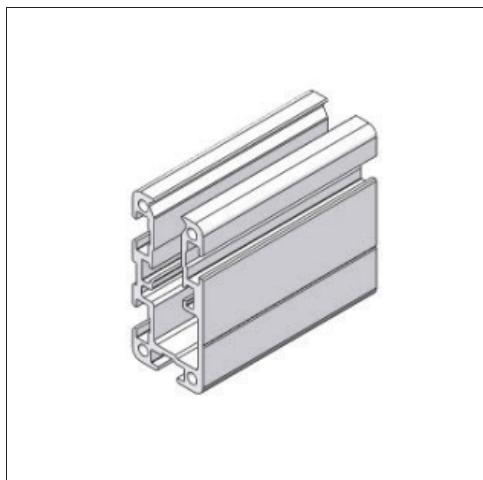
TYPICAL USE:

- Double Wireway junction kit: Used to make various types of junctions in Tekno's single Wireway.

FEATURES:

- Can be configured for either a "T" section, "Cross", 90 Deg, or vertical bends. Dividers can be easily removed and reconfigured for any use.





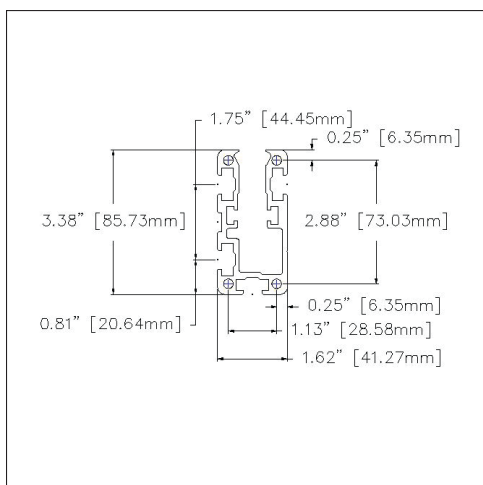
E061000100 Hot Rail Extrusion

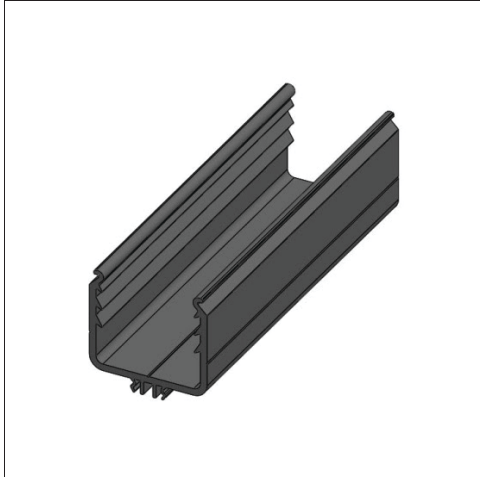
TYPICAL USE:

- Use in combination with Hot Rail Brushes to supply AC or DC power.

HARDWARE RECOMMENDED:

- E050142100- Hot Rail Cover
- V010050100- Hot Rail Copper Bar
- E050132100- Hot Rail Extrusion for Copper Bus





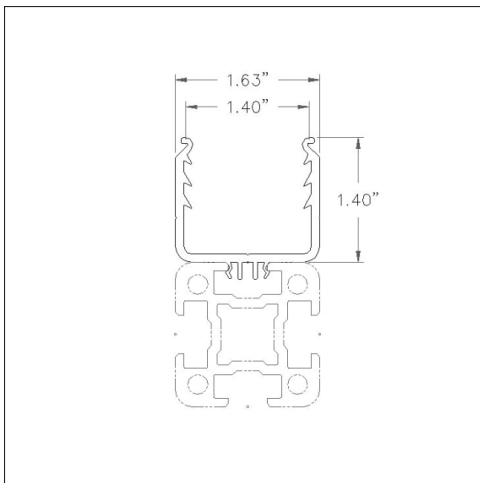
E050212100 1 5/8" X 1 1/2" Plastic Wireway

TYPICAL USE:

- Plastic Wireway: Used to route a small amount of airlines, cables or other medium along Tekno's T-slotted extrusion. Worked with any Tekno extrusion. Can be cut to lengths from 20' down to a few inches. Has a 1 1/2" x 1 1/2" channel for cables.

FEATURES:

- Used in conjunction with E050222100 (Plastic Wireway lid & H050062100 (Plastic Wireway retainers) to make a neat appearance.





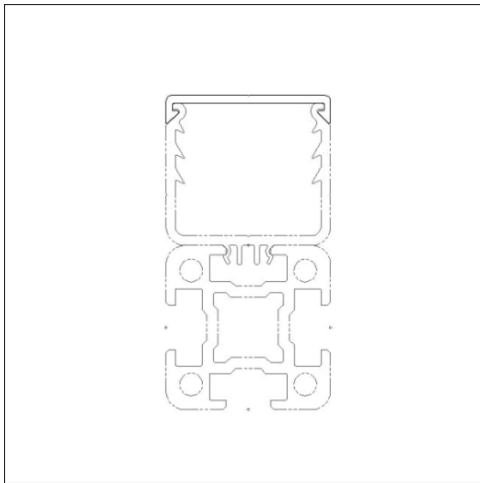
E050222100 1 5/8" Plastic Wireway Cover

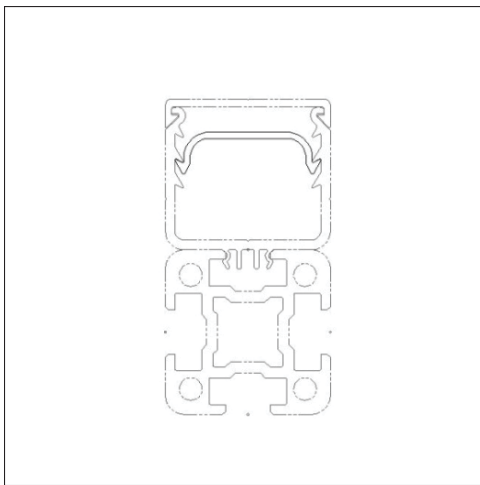
TYPICAL USE:

- Plastic Wireway lid: Used to cap the top of Tekno's plastic Wireway (E050212100). Lid is easily removable and snaps in place for easy access to cables.

FEATURES:

- Used in Conjunction with H050062100 (Plastic Wireway retainers) to keep cables retained in various applications.





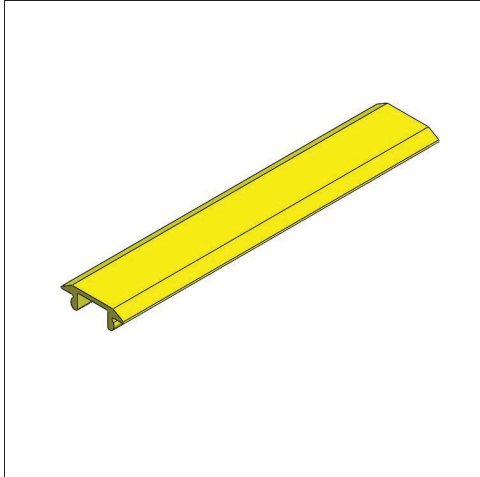
H050062100 1 5/8" Plastic Wire Way Wire Keeper Clip

TYPICAL USE:

- Plastic Wireway retainers: Used to secure cables inside of Tekno's Plastic Wireway (E050212100).

FEATURES:

- Quickly and easily snap into place to keep cables from falling out on vertical and inverted applications. Can be removed and reused as needed. Clips can snap into three different grooves to make various levels of wires inside the tray.



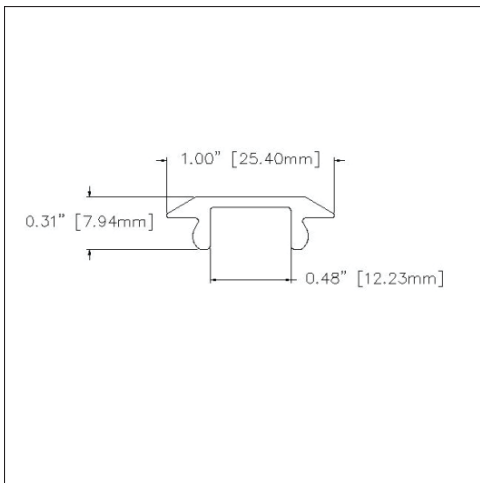
E050142100 Extrusion, Hot Rail, Cover, Yellow

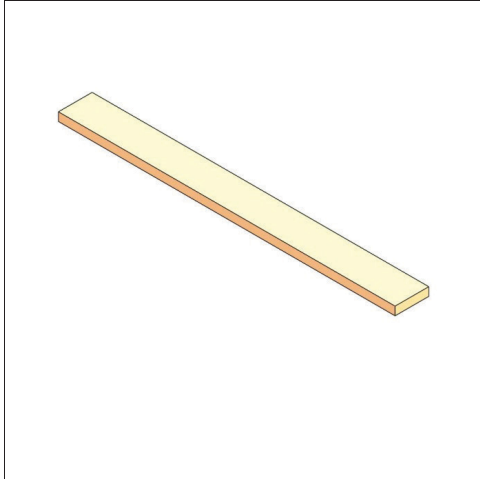
TYPICAL USE:

- Extrusion, Hot rail cover, yellow – Snaps into Hot rail extrusion (E061000100) or Tekno's Flow through beam (E030062100) to cover the opening. On the hot rail beam (E061000100) it protects articals from falling into the extrusion and contacting the copper bar.

FEATURES:

- In the Flow through beam (E030062100) covers the bottom opening of extrusion where the chain returns.





V010050100

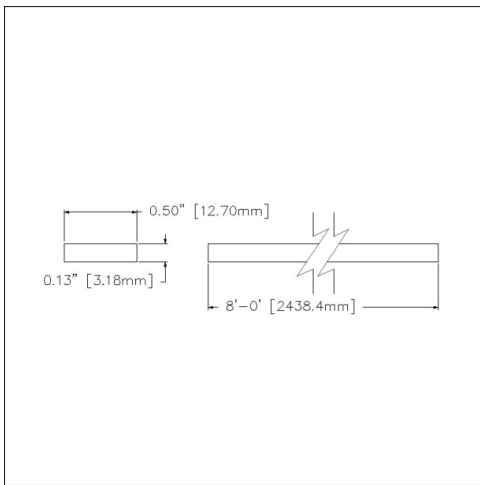
Electrical, Hot Rail, Copper Bar

TYPICAL USE:

- Electrical, Hot rail, copper bar – Slides inside Copper bar carrier (E050132100) to isolate from the Hot rail extrusion (E061000100).

FEATURES:

- The copper bar is used to carry power to the hot rail brushes (V010011100).



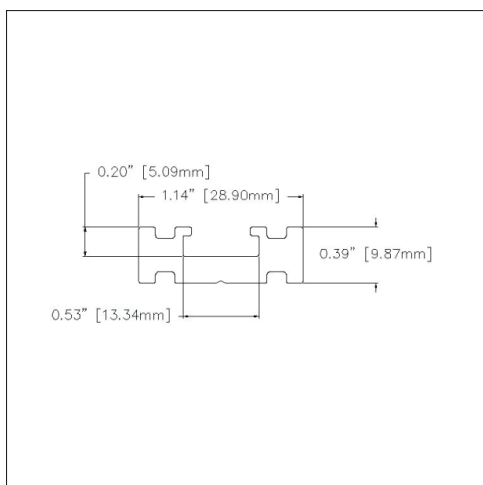


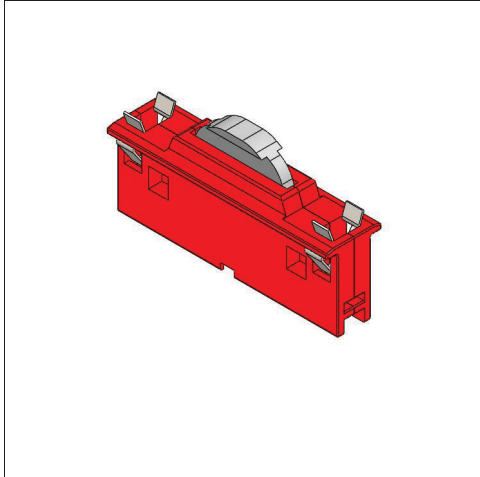
E050132100

Extrusion, Hot Rail, Carrier For Copper Bus

TYPICAL USE:

- Extrusion, hot rail, carrier for copper bus: Slides into Hot rail extrusion (E061000100) and isolates copper bar (V010050100) from the extrusion frame.

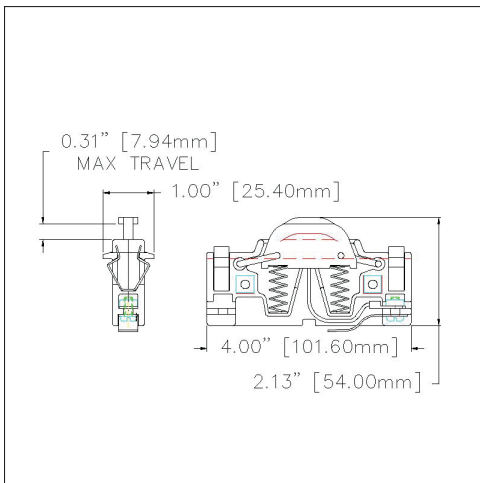




V010011100 Hot Rail Brush Assembly

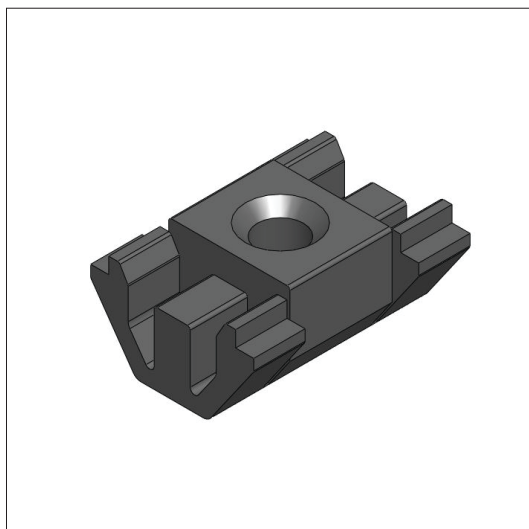
TYPICAL USE:

- This assembly is used for supplying AC or DC Voltage.
- 30 Amp rating
- Used with Tekno's Pallets.



H050072100

Hardware, T-Slot Anchor



TYPICAL USE:

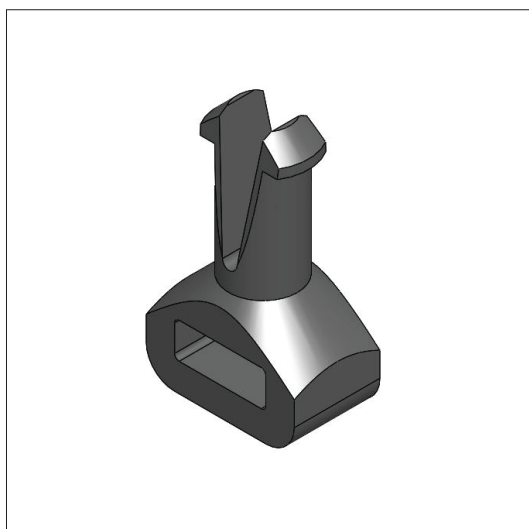
- Hardware, T-slot anchor – Drop into any of Tekno's aluminum extrusion's T-slots for a quick easy fastener or an anchor for a wire tie.

FEATURES:

- The hole in the anchor is made for a #10 screw to thread into the anchor. It can be used for fastening small brackets or other light weight hardware to the sides of conveyor, structures or anywhere else you have Tekno's T-slotted extrusion. Also by snapping part H050082100 (Zip tie pin) you can use this part to hold a bundle of wires to the side of an extrusion.

H050082100

Hardware, T-Slot Zip Tie Pin



TYPICAL USE:

- Hardware, T-slot anchor zip tie pin – Works in conjunction with a 5/32" dia. Hole to snap in an easily pivot.

FEATURES:

- Use as a mount to hold a bundle of wires in place. Works best with part H050072100 (T-slot anchor) to hold wires in a T-slot.