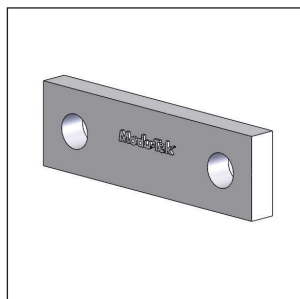




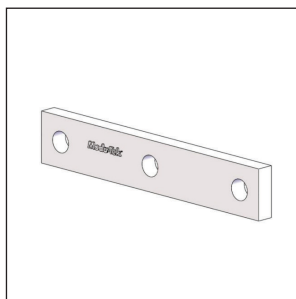
STRAP NUTS & JOINER STRIPS



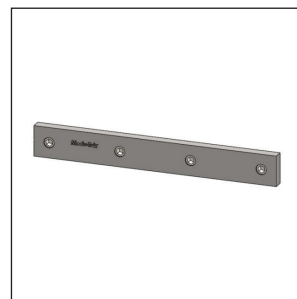
STRAP NUTS



2 - Hole Strap Nut
B060012100
Page 65

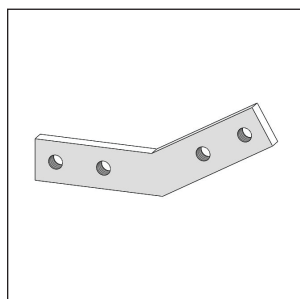


3 - Hole Strap Nut
B060022100
Page 66

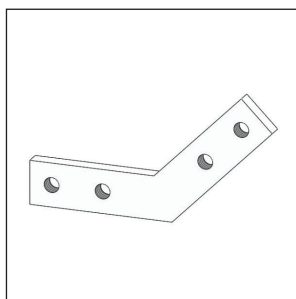


Hole Joiner Strip with
Set Screws
B060031100
Page 67

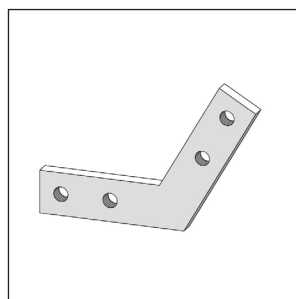
VERTICAL JOINER STRIPS



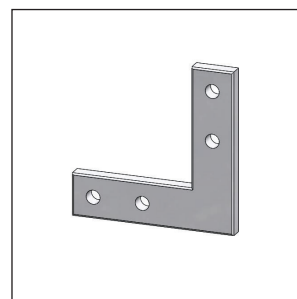
30° Vertical Joiner Strip
B060042100
Page 68



45° Vertical Joiner Strip
B060052100
Page 69



60° Vertical Joiner Strip
B060062100
Page 70

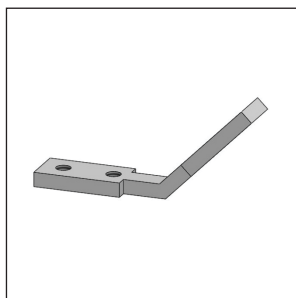


90° Vertical Joiner Strip
B060072100
Page 71

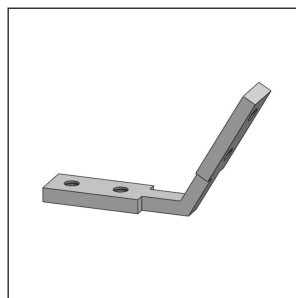
HORIZONTAL JOINER STRIPS



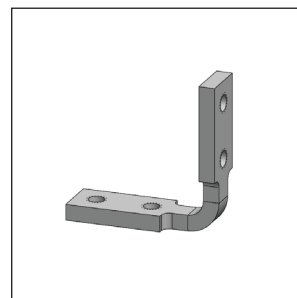
30° Horizontal Joiner
Strip B060082100
Page 72



45° Horizontal Joiner Strip
B060092100
Page 73



60° Horizontal Joiner Strip
B060102100
Page 74



90° Horizontal Joiner
Strip B060112100
Page 75



B060012100
2-Hole Strap Nut

TYPICAL USE:

- A high-loading fastening method which allows for easy movement along the length of a T-slot. The strap nut can function in place of T-bolts or Double Strap Nuts on Web Brackets, Corner Tab Brackets, etc. when a higher loading capacity is required.

FEATURES:

- Includes two pre-tapped holes for Hex Head Cap Screws, Set Screws, or Machine Screws.

MATERIAL:

- Mild Steel, Zinc Plated.

WEIGHT:

- 0.13 lb [0.06 kg]

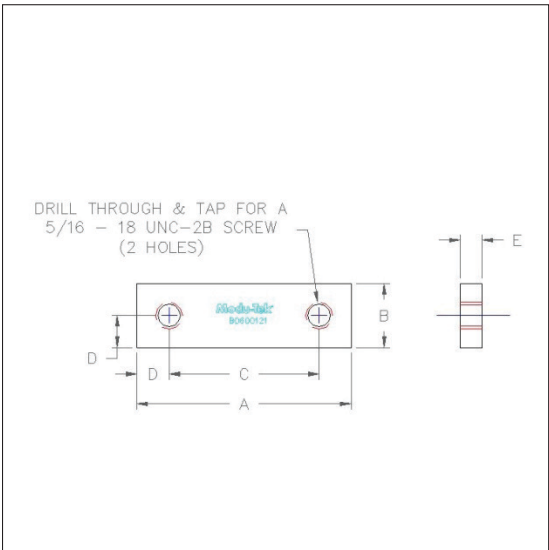
**HARDWARE RECOMMENDED
FOR ASSEMBLY:**

For a Web Bracket:

- 5/16" - 18 x 5/8" Hex Head Cap Screws (31C62HCS5Z), 2 each.
- 5/16" Flat Washers (68N34WSDZ/089), 2 each.

For a 45° Web or End Plate Bracket:

- 5/16" - 18 x 3/4" Hex Head Cap Screws (31C75HCS5Z), 2 each.



	Inches (in.)	Millimeters (mm)
A	2.50	63.50
B	0.75	19.05
C	1.75	44.45
D	0.38	9.53
E	0.25	6.35
F	–	–
G	–	–
H	–	–



B060012100
2-Hole Strap Nut

TYPICAL USE:

- A high-loading fastening method which allows for easy movement along the length of a T-slot. The strap nut can function in place of T-bolts or Double Strap Nuts on Web Brackets, Corner Tab Brackets, etc. when a higher loading capacity is required. When used in this manner, the third pre-tapped hole, secured by a Set Screw, can serve to further prevent slippage of the parts along the length of the T-slot.

FEATURES:

- Includes three pre-tapped holes for Hex Head Cap Screws, Set Screws, or Machine Screws.

MATERIAL:

- Mild Steel, Zinc Plated.

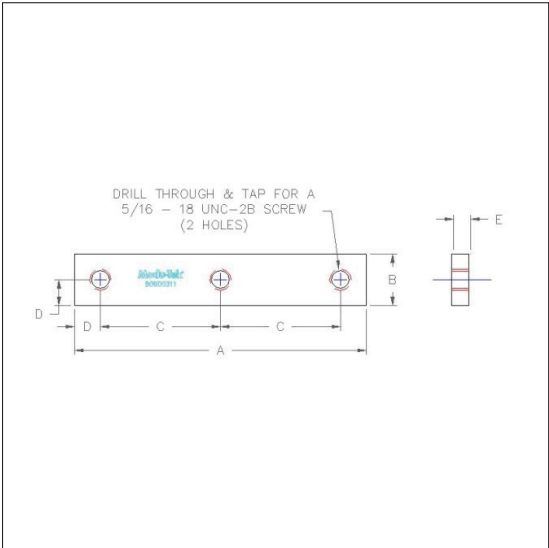
WEIGHT:

- 0.21 lb [0.10 kg]

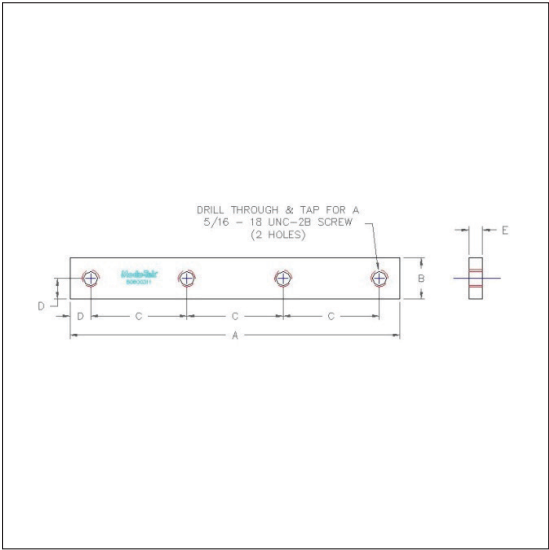
**HARDWARE RECOMMENDED
FOR ASSEMBLY:**

For a Web Bracket:

- 5/16" - 18 x 5/8" Hex Head Cap Screws (31C62HCS5Z), 2 each.
- 5/16" - 18 x 5/16" Stainless Steel Set Screw (31C31KKCS), 1 each.
- 5/16" Flat Washers (68N34WSDZ/089), 2 each.



	Inches (in.)	Millimeters (mm)
A	4.25	107.95
B	0.75	19.05
C	1.75	44.45
D	0.38	9.53
E	0.25	6.35
F	–	–
G	–	–
H	–	–



	Inches (in.)	Millimeters (mm)
A	6.00	152.40
B	0.75	19.05
C	1.75	44.45
D	0.38	9.53
E	0.25	6.35
F	–	–
G	–	–
H	–	–

B060031100 4-Hole Strap Nut w/ Set Screws

TYPICAL USE:

- To mate and connect support beams in an end-to-end fashion when inserted into T-slots and fastened.
- Can be used as a strap nut, a high-loading fastening method which allows for easy movement along the length of a T-slot. The strap nut can function in place of T-bolts and Double Square Nuts on Web Brackets, Corner Tab Brackets, etc. when a higher loading capacity is required. When used in this manner, the third and fourth pre-tapped holes, secured by Set Screws, can serve to further prevent slippage of the parts along the length of the T-slot.

FEATURES:

- Four pre-tapped 5/16" holes accommodate Set Screws, Cap Screws, or Machine Screws for connecting beams and attachments.

MATERIAL:

- Mild Steel, Zinc Plated.

WEIGHT:

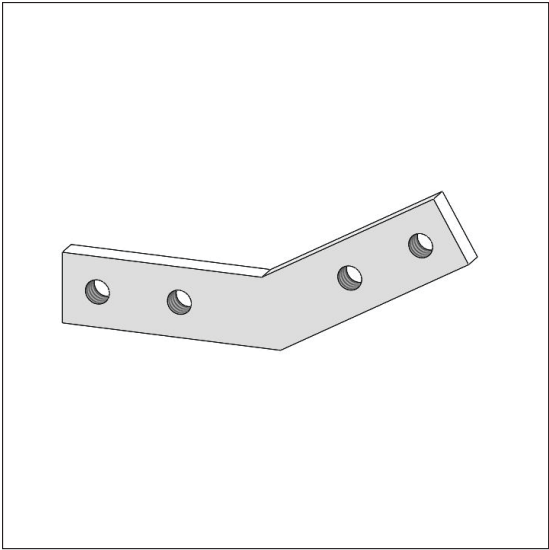
- 0.21 lb [0.10 kg]

HARDWARE RECOMMENDED FOR ASSEMBLY:

For a Web Bracket:

- 5/16" - 18 x 5/8" Hex Head Cap Screws (31C62HCS5Z), 2 each.
- 5/16" - 18 x 5/16" Stainless Steel Set Screw (31C31KKCS), 1 each.
- 5/16" Flat Washers (68N34WSDZ/089), 2 each.

B060032100 No set screws



B060042100
30° Vertical Joiner Strip

TYPICAL USE:

- To build a stable and neat framework corner from two Support Beams mated and connected end-to-end at a 30° mitered joint. The fitting is placed in the T-slots and clamped against the slot with Set Screws.

FEATURES:

- Four pre-tapped 5/16" holes accommodate Set Screws, Cap Screws, or Machine Screws for connecting beams and attachments.

MATERIAL:

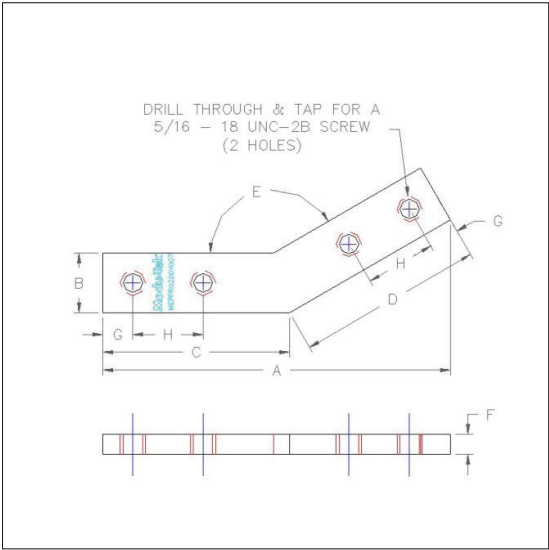
- Mild Steel, Zinc Plated.

WEIGHT:

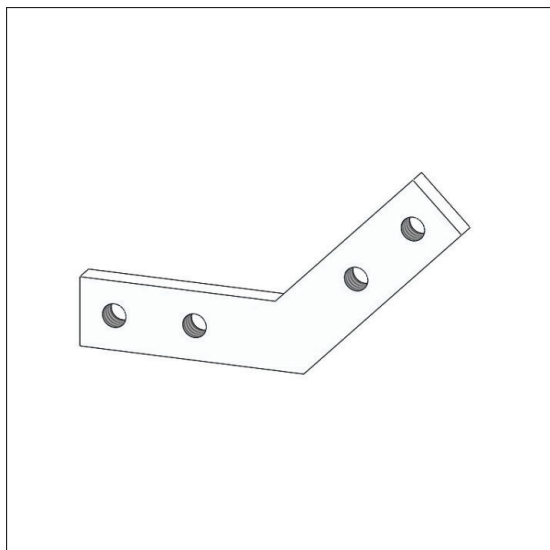
- 0.20 lb [0.09 kg]

**HARDWARE RECOMMENDED
FOR ASSEMBLY:**

- 5/16" - 18 x 5/16" Stainless Steel Set Screws (31C31KKCS), 4 each.



	Inches (in.)	Millimeters (mm)
A	4.34	110.24
B	0.75	19.05
C	2.33	59.18
D	2.33	59.18
E	150.00°	3810.00°
F	0.25	6.35
G	0.38	9.53
H	0.88	22.23



B060052100 45° Vertical Joiner Strip

TYPICAL USE:

- To build a stable and neat framework corner from two Support Beams mated and connected end-to-end at a 45° mitered joint. The fitting is placed in the T-slots and clamped against the slot with Set Screws.

FEATURES:

- Four pre-tapped 5/16" holes accommodate Set Screws, Cap Screws, or Machine Screws for connecting beams and attachments.

MATERIAL:

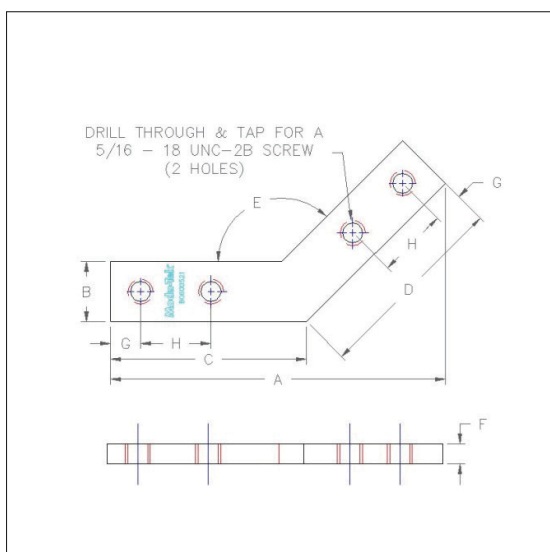
- Mild Steel, Zinc Plated.

WEIGHT:

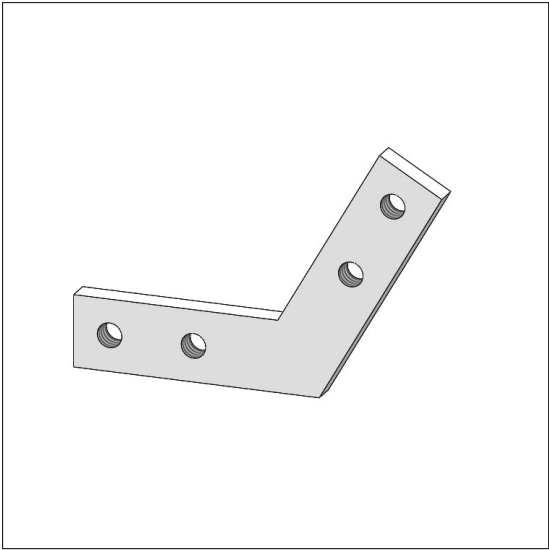
- 0.21 lb [0.10 kg]

HARDWARE RECOMMENDED FOR ASSEMBLY:

- 5/16" - 18 x 5/16" Stainless Steel Set Screws (31C31KKCS), 4 each.



	Inches (in.)	Millimeters (mm)
A	4.16	105.66
B	0.75	19.05
C	2.44	61.98
D	2.44	61.98
E	135.00°	3429.00°
F	0.25	6.35
G	0.38	9.53
H	0.88	22.23



B060062100
60° Vertical Joiner Strip

TYPICAL USE:

- To build a stable and neat framework corner from two Support Beams mated and connected end-to-end at a 60° mitered joint. The fitting is placed in the T-slots and clamped against the slot with Set Screws.

FEATURES:

- Four pre-tapped 5/16" holes accommodate Set Screws, Cap Screws, or Machine Screws for connecting beams and attachments.

MATERIAL:

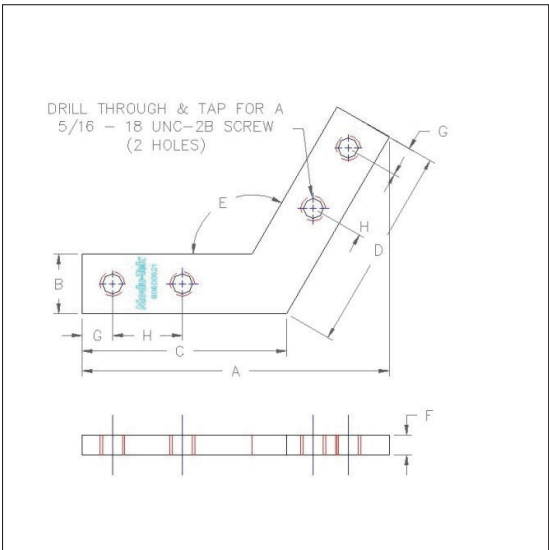
- Mild Steel, Zinc Plated.

WEIGHT:

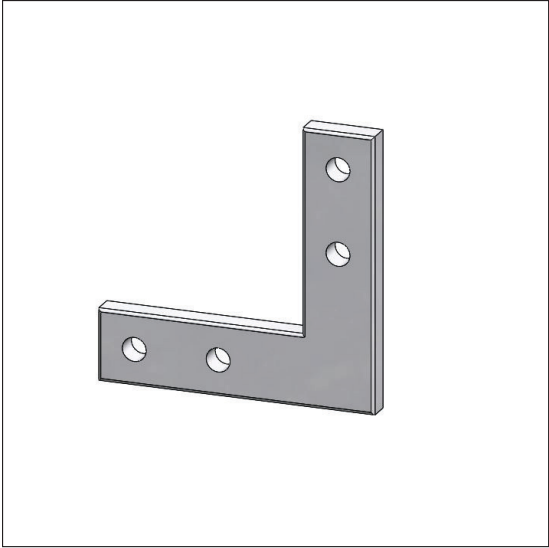
- 0.21 lb [0.10 kg]

**HARDWARE RECOMMENDED
FOR ASSEMBLY:**

- 5/16" - 18 x 5/16" Stainless Steel Set Screws (31C31KKCS), 4 each.



	Inches (in.)	Millimeters (mm)
A	3.84	97.54
B	0.75	19.05
C	2.56	65.02
D	2.56	65.02
E	120.00°	3048.00°
F	0.25	6.35
G	0.38	9.53
H	0.88	22.23



B060072100
90° Vertical Joiner Strip

TYPICAL USE:

- To build a stable and neat framework corner from two Support Beams mated and connected end-to-end at a 90° mitered joint. The fitting is placed in the T-slots and clamped against the slot with Set Screws.

FEATURES:

- Four pre-tapped 5/16" holes accommodate Set Screws, Cap Screws, or Machine Screws for connecting beams and attachments.

MATERIAL:

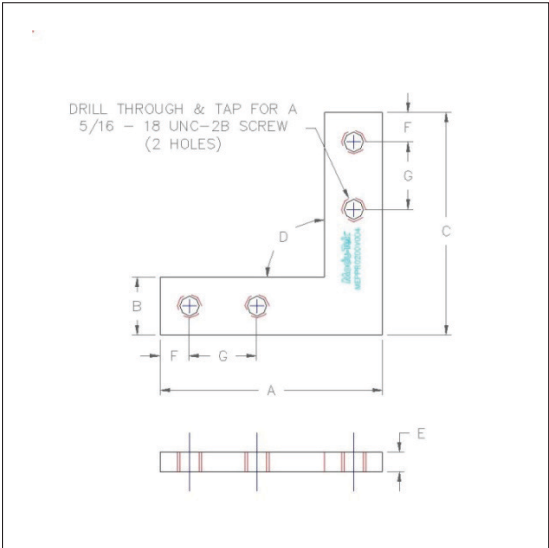
- Mild Steel, Zinc Plated.

WEIGHT:

- 0.32 lb [0.14 kg]

HARDWARE RECOMMENDED FOR ASSEMBLY:

- 5/16" - 18 x 5/16" Stainless Steel Set Screws (31C31KKCS), 4 each.



	Inches (in.)	Millimeters (mm)
A	2.88	73.15
B	0.75	19.05
C	2.88	65.02
D	90.00°	2286.00°
E	0.25	6.35
F	0.38	9.53
G	0.88	22.23
H	—	—



B060082100
30° Horizontal Joiner Strip

TYPICAL USE:

- An alternative to the 30° Vertical Joiner Strip to build a stable and neat framework corner from two Support Beams mated and connected end-to-end at a 30° mitered joint. The fitting is placed in the T-slots and clamped against the slot with Set Screws.

FEATURES:

- Four pre-tapped 5/16" holes accommodate Set Screws, Cap Screws, or Machine Screws for connecting beams and attachments.

MATERIAL:

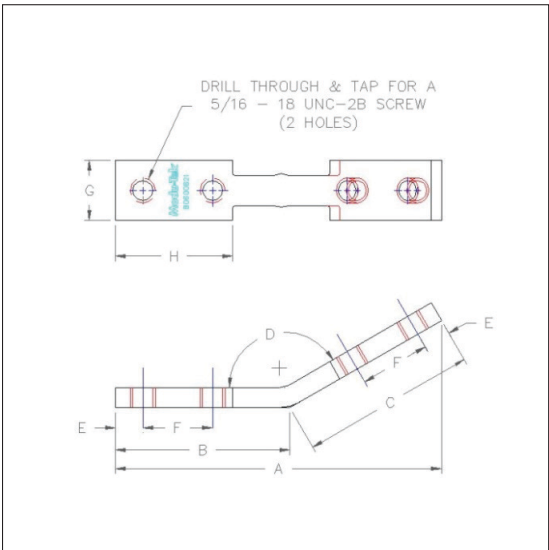
- Mild Steel, Zinc Plated.

WEIGHT:

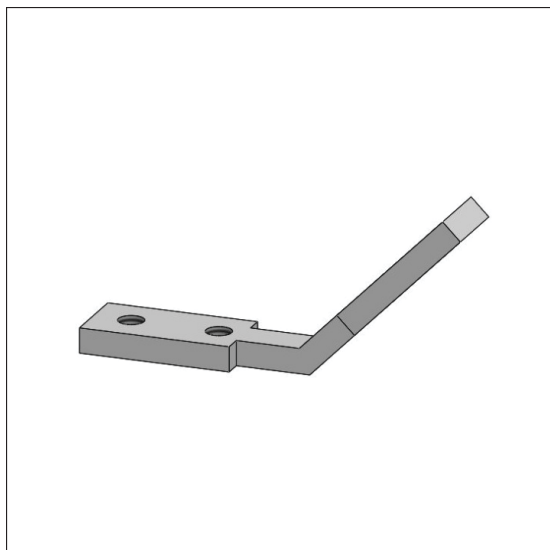
- 0.19 lb [0.09 kg]

**HARDWARE RECOMMENDED
FOR ASSEMBLY:**

- 5/16" - 18 x 5/16" Stainless Steel Set Screws (31C31KKCS), 4 each.



	Inches (in.)	Millimeters (mm)
A	4.09	103.89
B	2.19	55.63
C	2.19	55.63
D	150.00°	3810.00°
E	0.35	8.89
F	0.88	22.23
G	0.75	19.05
H	1.49	37.85



B060092100 45° Horizontal Joiner Strip

TYPICAL USE:

- An alternative to the 45° Vertical Joiner Strip to build a stable and neat framework corner or joint from two Support Beams mated and connected end-to-end or end to side. The fitting is placed in the T-slots and clamped against the slot with Set Screws.

FEATURES:

- Four pre-tapped 5/16" holes accommodate Set Screws, Cap Screws, or Machine Screws for connecting beams and attachments.

MATERIAL:

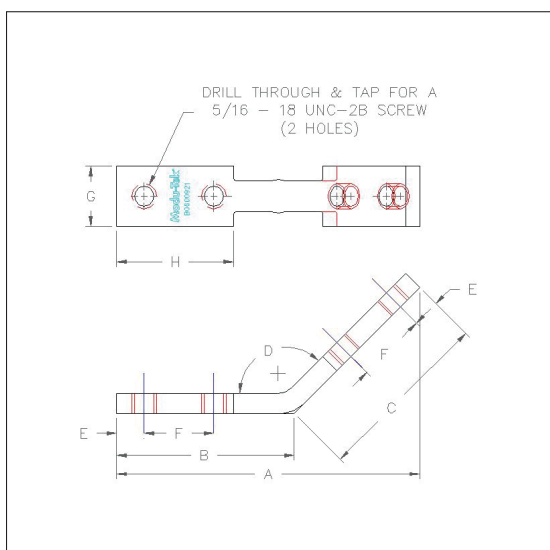
- Mild Steel, Zinc Plated.

WEIGHT:

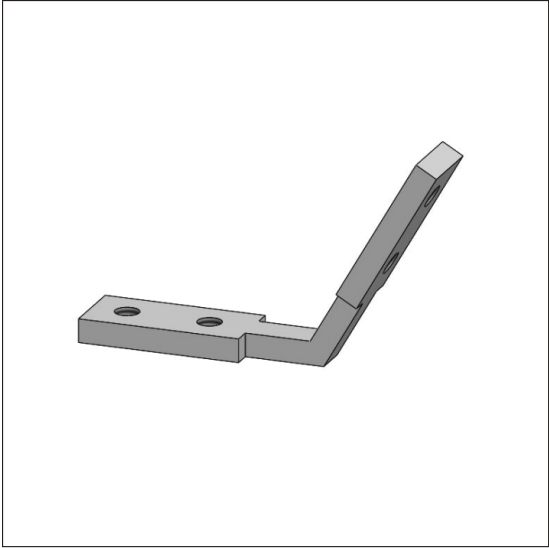
- 0.19 lb [0.09 kg]

HARDWARE RECOMMENDED FOR ASSEMBLY:

- 5/16" - 18 x 5/16" Stainless Steel Set Screws (31C31KKCS), 4 each.



	Inches (in.)	Millimeters (mm)
A	3.80	96.52
B	2.23	56.64
C	2.23	56.64
D	135.00°	3429.00°
E	0.35	8.89
F	0.88	22.23
G	0.75	19.05
H	1.49	37.85



B060102100
60° Horizontal Joiner Strip

TYPICAL USE:

- An alternative to the 60° Vertical Joiner Strip to build a stable and neat framework corner or joint from two Support Beams mated and connected end-to-end or end to side. The fitting is placed in the T-slots and clamped against the slot with Set Screws.

FEATURES:

- Four pre-tapped 5/16" holes accommodate Set Screws, Cap Screws, or Machine Screws for connecting beams and attachments.

MATERIAL:

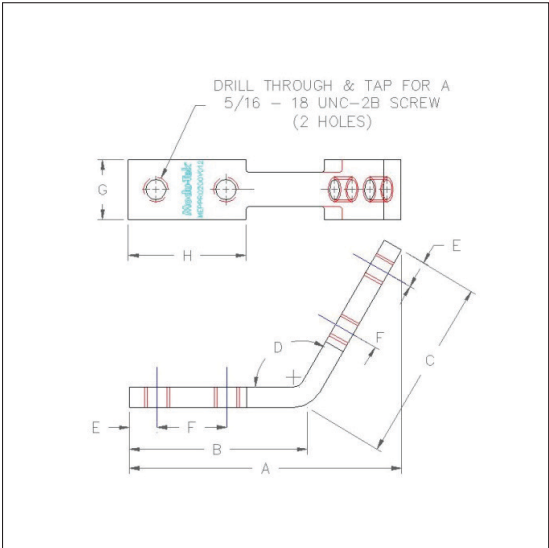
- Mild Steel, Zinc Plated.

WEIGHT:

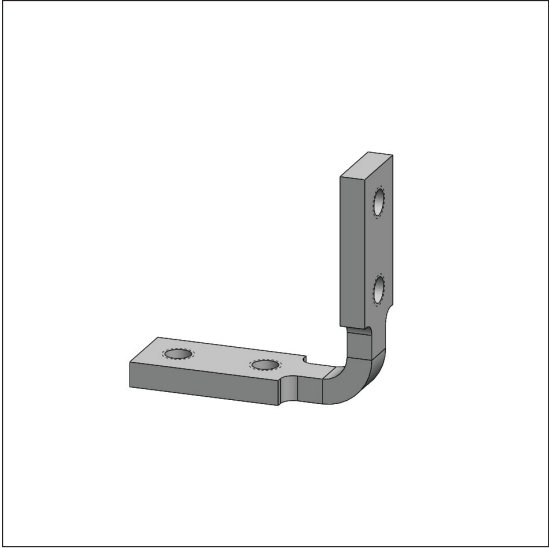
- 0.19 lb [0.09 kg]

**HARDWARE RECOMMENDED
FOR ASSEMBLY:**

- 5/16" - 18 x 5/16" Stainless Steel Set Screws (31C31KKCS), 4 each.



	Inches (in.)	Millimeters (mm)
A	3.40	86.36
B	2.23	56.64
C	2.29	58.17
D	120.00°	3048.00°
E	0.35	8.89
F	0.88	22.23
G	0.75	19.05
H	1.49	37.85



B060112100
90° Horizontal Joiner Strip

TYPICAL USE:

- An alternative to the 90° Vertical Joiner Strip to build a stable and neat framework corner or joint from two Support Beams mated and connected either end-to-end at a 90° mitered joint or perpendicular to one another end-to-side with square ends. The fitting is placed in the T-slots and clamped against the slot with Set Screws.

FEATURES:

- Four pre-tapped 5/16" holes accommodate Set Screws, Cap Screws, or Machine Screws for connecting beams and attachments.

MATERIAL:

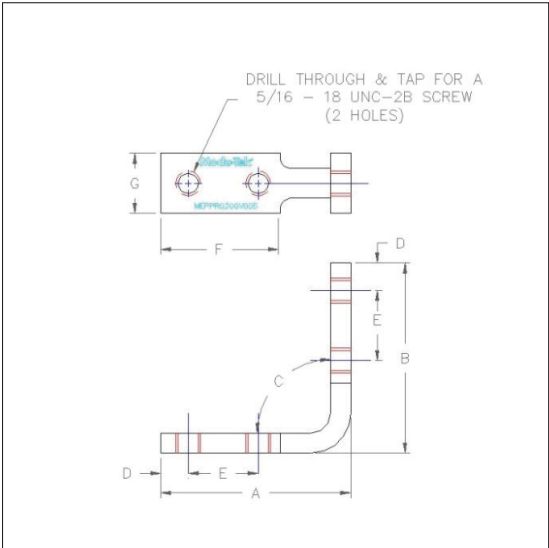
- Mild Steel, Zinc Plated.

WEIGHT:

- 0.19 lb [0.09 kg]

**HARDWARE RECOMMENDED
FOR ASSEMBLY:**

- 5/16" - 18 x 5/16" Stainless Steel Set Screws (31C31KKCS), 4 each.



	Inches (in.)	Millimeters (mm)
A	2.38	60.45
B	2.38	60.45
C	90.00°	2286.00°
D	0.35	8.89
E	0.88	22.23
F	1.49	37.85
G	0.75	19.05
H	—	—